



TILBURG UNIVERSITY

STUDY ABROAD & EXCHANGE FACT SHEET 2025-26

ERASMUS+ INSTITUTION CODE

NL TILBURG 01

CONTACTS

INTERNATIONAL MOBILITY COORDINATORS (IN- & OUTBOUND EXCHANGE)



Ingrid Liendo Garcia
USA and special programs ISEP & QTEM



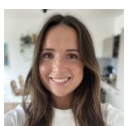
Veronique Hellwig
South East Asia, Latin America, Africa & Oceania



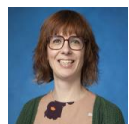
Rachael Vickerman
Asia (excl. South East Asia) & the Middle East



Chris Verstappen
Europe



Caitlin Stonestreet
Europe
Canada (temporarily)



Ellis Renders
Europe

INTERNATIONAL MOBILITY OFFICERS



Monique Veldmeijer
Incoming students



Patricia Herrijgers
Outgoing students



Rik Verlaan
Incoming & Outgoing students

VISITING ADDRESS

Tilburg University – International Office
Intermezzo Building – Room I 612
Professor de Moorplein 521
5037 DR Tilburg
The Netherlands
☎ +31 (0)13 466 4477
✉ studyabroad@tilburguniversity.edu

POSTAL ADDRESS

Tilburg University
PO Box 90153
5000 LE Tilburg
The Netherlands

ONLINE CHANNELS

Website: [🌐 tilburguniversity.edu/exchange](https://www.tilburguniversity.edu/exchange)
Facebook: [📘 Tilburg University – Study Abroad](https://www.facebook.com/TilburgUniversity-StudyAbroad)
Instagram: [📷 @tilburguabroad](https://www.instagram.com/tilburguabroad)

OUR CAMPUS

GREEN SPACE & AN INTERNATIONAL COMMUNITY



ABOUT TILBURG UNIVERSITY

Tilburg University is a thriving university specializing in Social Sciences and Arts & Humanities. Social connection, academic excellence, and a strong campus feeling are at the heart of our education experience. Understanding and serving society is what drives us. Our green campus offers an attractive base for fostering an international community where students and teachers can inspire and challenge each other. Tilburg University consists of five different schools: Economics & Management, Law, Social and Behavioral Sciences, Humanities and Digital Sciences, and Theology. University College Tilburg provides the interdisciplinary Bachelor's program of Liberal Arts and Sciences. TIAS School of Business and Society is the business school of Tilburg University and Eindhoven University of Technology, offering post-graduate education.



According to the three most renowned university rankings (THE, ARWU, and QS), Tilburg University belongs to the best 2% of the world's 17,000 universities. tilburguniversity.edu/about/tilburg-university/rankings

ABOUT TILBURG

Large enough to find plenty to do, but still small enough to run into people you know, Tilburg is an idyllic, entrepreneurial and cultural city with world-class public institutions and a calendar packed with a variety of public events. It's a true university city, too: with a population of 30,000 students, 1 in 8 people in Tilburg is a student!

OUR OTHER LOCATIONS

In addition to our Tilburg campus, we have our Jheronimus Academy of Data Science (JADS) which is a unique collaboration with Eindhoven University of Technology, the municipality of 's-Hertogenbosch and the province of North Brabant. Together we have created a knowledge infrastructure that places the region of Brabant at the heart of the future.

Our Tilburg School of Catholic Theology (TST) provides academic research and education from and about the Christian tradition in contemporary society. This School is also present in two locations: the green Tilburg University campus, and in the city of Utrecht. The English-taught programs are provided in Tilburg, the Dutch-taught programs in Utrecht.

CAMPUS LIFE

With our green campus designed to be fast and easy to navigate, you will be able to stroll between the library and your lecture hall or your favorite café in no time. All university buildings are within walking distance from each other, and are set amongst landscaped gardens and open green spaces. Our campus is home to over 17,000 students.

Take a virtual campus tour at tilburguniversity.edu/campus-tour

Total student population in Tilburg:	approx. 30,000
Population of Tilburg:	approx. 227,694
Distance to Amsterdam (by car):	110 km / 68 miles
Distance to Brussels (by car):	120 km / 75 miles
Distance to Paris (by car):	415 km / 257 miles
Distance to Berlin (by car):	680 km / 422 miles



NOMINATION & APPLICATION

IMPORTANT DATES & REQUIREMENTS

NOMINATION DEADLINES

Fall 2025 and Full Year	1 May 2025
Spring 2026	1 October 2025

APPLICATION DEADLINES

Fall 2025 and Full Year	15 May 2025
Spring 2026	15 October 2025

REGISTRATION DAYS

Fall 2025	Mid/late August 2025 *
Spring 2026	Late January 2026 *

PROGRAM INTRODUCTION

Fall 2025	Late August 2025 *
Spring 2026	Late January 2026 *

START OF CLASSES

Fall 2025	Late August 2025 *
Spring 2026	Late January / early February 2026 *

EXAM PERIOD

Fall 2025	December 2025 / January 2026 (re-sits in January if necessary) *
Spring 2026	May / June 2026 (plus re-sits in July if necessary) *

RE-SIT EXAM PERIOD

Fall 2025	January & mid-June / July 2026 *
Spring 2026	Mid-June / July 2026

** Period and exact dates to be confirmed and are subject to change.*

PUBLIC HOLIDAYS IN THE NETHERLANDS

There are a number of official public holidays in the Netherlands each year, which you can find [here](#).

BALANCE BETWEEN SEMESTERS

Due to the high number of incoming students in the fall semester (August – January) and, consequently, a high demand for student housing, we prefer an equal balance in nominations from our partners across both semesters.

CONTRACTS AND PARTNERSHIPS

For any queries regarding exchange contracts and partnerships with Tilburg University, please contact our International Relations department directly at internationalrelations@tilburguniversity.edu.

NOMINATION & APPLICATION PROCEDURE

 tilburguniversity.edu/education/exchange-programs/applicationprocedure

Students should check with their home university whether Tilburg University is one of their exchange partners, and apply for an exchange through their home university. Partner universities should submit the details of their selected students via our online nomination system. A link to the system and login details will be emailed to partners closer to the nomination deadlines. Nominations will not be accepted via email.

All nominated students will receive an email with the application instructions and practical information about the exchange program at Tilburg University a few weeks before the application deadline. Students should complete their application online. All required documents need to be uploaded through the online application system. We do not require original documents. As part of their online application, students must upload:

1. Transcript of records **in English** (students who are in their Master studies must upload both their Bachelor and Master grade list)
2. Additional documents may apply for specific courses (e.g. motivation letter and/or essay). Please find more information in the 'courses for exchange students' section of this fact sheet (below)

ELIGIBILITY REQUIREMENTS

BACHELOR / UNDERGRADUATE EXCHANGE

1. We rely on our partner universities to nominate students who are proficient in English **to CEFR level B2** (equivalent to the test scores found on our [website](#)).
As of May 2024, we do not currently require IELTS/TOEFL certificates from applicants with mainland Chinese nationality.
2. Successfully completed at least 1.5 years of education, but preferably two years of studies within in a relevant field of studies (economics, business, law, social & behavioral sciences, humanities, theology).

MASTER / GRADUATE EXCHANGE

1. We rely on our partner universities to nominate students who are proficient in English **to CEFR level C1** (equivalent to the test scores found on our [website](#)).
As of May 2024, we do not currently require IELTS/TOEFL certificates from applicants with mainland Chinese nationality.
2. Successfully **completed** an undergraduate program in a relevant field of studies (economics, business, law, social & behavioral sciences, humanities, theology).

INCLUSIVE MOBILITY

Students of all backgrounds are welcome at Tilburg University. A range of services are available for students who may require extra support. For more information, see:  <https://inclusivemobility.eu/countries/nl/institutions/6878>.

COURSE INFORMATION

COURSES FOR EXCHANGE STUDENTS

tilburguniversity.edu/education/exchange-programs/courses

Tilburg University offers a wide variety of undergraduate and graduate level courses to exchange students. Our incoming exchange students are allowed to take courses from all schools, as long as they meet the prerequisites of the courses at the start of the semester. In some cases, other restrictions or selection criteria may apply (e.g. minimum grade average, motivation to take a course, etc.). These will be mentioned as “conditions apply” on the course webpage. We offer courses within the fields of:

Microeconomics	Macroeconomics	Econometrics
Finance	Accounting	Marketing
Information Management	Operations Research	Organization & Strategy
Organization Studies	Human Resource Studies	Psychology
Sociology	Theology	Public Administration
Culture Studies	Philosophy	Liberal Arts & Sciences (restricted)
Global Law (restricted)	Law	Communication & Information Sciences
Data Science	Cognitive Science & Artificial Intelligence	

LANGUAGE COURSES

tilburguniversity.edu/education/languages

Our on-campus Language Center offers courses to students who wish to improve their skills in Dutch, Arabic, Chinese, English, Korean, French, Portuguese, German, Spanish or Italian. In addition, tools for self-study are offered to anyone who wishes to improve their language skills. Exchange students receive language vouchers (of 12 ECTS in total) with which they can register for a language course for free!

CERTIFICATE PROGRAMS FOR EXCHANGE STUDENTS

tilburguniversity.edu/education/exchange-programs/courses/certificate-programs

All fall semester exchange students are invited to participate in one of our Certificate Programs. These programs are designed for students who would like to specialize and gain a depth of understanding in a focused area of study. A certificate will only be awarded if the student successfully completes all courses from the program. The following certificated programs are currently available:

Accounting	Information & Supply Chain Management		Marketing
Finance	Essential Digital Skills	Economics	Entrepreneurship & Strategy

LEARNING EXPECTATIONS



INSTRUCTION METHODS

A mix of (guest) lectures to a larger number of students and interactive seminars, workshops and tutorials with in-depth discussions in groups of between 10 and 40 students.

ASSESSMENT METHODS

Oral or written examinations (some courses have midterms as well), individual or group papers, essays, case studies, in-class presentations and other forms of coursework all count towards the final grade. At the end of each semester an examination period is scheduled.

COURSE LOAD

- Most courses are 6 ECTS (study load of 168 hours)
- A full time workload for one semester is 30 ECTS
- A regular workload for exchange students is 4 or 5 courses (24 – 30 ECTS)

GRADING SYSTEM

The Dutch grading system uses grades from 1 to 10. Grades with one decimal place can be issued. The lowest passing grade at Tilburg University is a 6.0. Any grade below 6.0 is a fail.

BACHELOR GRADES:

Grade	Description	% of students with same grade	% of students with same grade or higher
10.0	Excellent	1%	1%
9.5	Excellent	1%	2%
9.0	Excellent	4%	6%
8.5	Excellent	7%	12%
8.0	Very good	12%	25%
7.5	Very good	15%	40%
7.0	Good	18%	58%
6.5	Good	17%	75%
6.0	Sufficient	25%	100%

MASTER GRADES:

Grade	Description	% of students with same grade	% of students with same grade or higher
10.0	Excellent	0%	0%
9.5	Excellent	1%	1%
9.0	Excellent	4%	5%
8.5	Excellent	9%	14%
8.0	Very good	17%	31%
7.5	Very good	20%	52%
7.0	Good	20%	72%
6.5	Good	14%	86%
6.0	Sufficient	14%	100%

LIFE IN TILBURG

COST OF LIVING, HOUSING & SERVICES

COST OF LIVING

Living in Tilburg is relatively inexpensive compared to other Dutch university cities. The cost of living is approximately €1000 to €1200 per month as estimated by the Netherlands' Immigration and Naturalization Service. Below is a general overview of monthly costs for students. These estimated costs can vary from person to person and also depend on individual lifestyle.

MONTHLY LIVING COSTS (ESTIMATE)	
Accommodation	From €404
Food and beverages	€300
Books and readers	€65
Health, liability, travel insurance	€100



A second-hand bicycle and lock will cost about €125. A university sports card costs €117,95 per semester or €159,95 for one year.

** Prices correct as of August 2024. Prices may be slightly increased by the 2025-26 academic year.*

SERVICES AND FACILITIES

INTERNATIONAL MOBILITY TEAM

The International Mobility Team is the first point of contact for exchange students. We are here to help ensure that students' exchange experience runs as smoothly as possible at all points of the process.

VISA APPLICATION

tilburguniversity.edu/education/welcome-new-student/immigration

The Immigration Coordinators at Tilburg University process visa applications for all incoming students who require a visa and/or residence permit to study in the Netherlands. They help students through every step of the process, taking into account your personal situation.

Students who require a visa and/or residence permit must pay an immigration fee of €228* to begin their immigration process. The process will begin shortly after the exchange application deadline. Please note that students are required to show proof that they have the necessary funds to finance their stay in Tilburg. This is currently €6,125* for one-semester students (5 months) and €12,250* for full-year students (10 months). Means by which students can prove their access to these funds will be explained to students in their personal online immigration profile.

Students who already hold a study-based residence permit for an EU-country may be eligible for the intra-EU mobility scheme, under the condition that their home university supports this scheme. During the immigration process you will be asked to upload a residence permit (for any country and for any purpose) if you are in possession of one. Based on that uploaded document you may be asked if you want to make use of the intra-EU mobility scheme.

**Prices correct as of August 2024. Fees for 2025/26 will be updated once known, in January 2025.*

HOUSING

www.tilburguniversity.edu/education/welcome-new-student/accommodation

Tilburg University does not offer on-campus accommodation. However, we are partnered with student housing organization WonenBregburg, which offers furnished accommodation to international students via yourstudentroom.nl. Most of the rooms are in the building on Professor Verbernelaan (popularly known as “Verbs”), on the edge of the campus.

Unfortunately, rooms in the Talent Square building are not available for exchange students. The number of available rooms is limited, but 80% of incoming exchange students will be able to reserve a room.

The monthly rent for the 2025-26 academic year is between €404 and €1100 per month. The rental contract for fall semester students runs from August to January (5 months) and for spring semester students from January to August (6.5 months). **All semester- long students must pay the rent for the entire semester at the time of registration.** Full-year students must make two payments: one before their arrival for the first semester, and one halfway through the academic year for the second semester.

Students who are not able to register for reserved accommodation need to find their own accommodation on the private market. It is their own responsibility to arrange this and our [Housing Office \(studenthousing@tilburguniversity.edu\)](mailto:studenthousing@tilburguniversity.edu) can assist where needed. We also offer our incoming students the opportunity to sub-let a Tilburg University student’s room whilst that student is on exchange abroad. This is coordinated internally via the same portal that students submit their exchange application on, called Mobility Online. Availability of sub-lets varies per semester and students must arrange the conditions of the sub-let between themselves.

There is an extremely high demand for housing on the private market, especially in fall semesters, meaning that sourcing accommodation can be difficult. Students with a flexible choice regarding in which semester to study abroad are advised to come to Tilburg in the spring semester to avoid a potentially stressful search for accommodation. **Tilburg University advises students not to travel to Tilburg or to make other financial commitments if they have not secured housing.**

MEDICAL SERVICES IN TILBURG

There is currently a lot of pressure on General Practitioner (GP) services in Tilburg. Many GP practices are full and do not have space for new patients to register. Students are advised to be persistent with their search and to contact the International Mobility Office if they require further information or assistance. Most GP practices offer ‘passerby’ appointments, whereby students can make a same-day appointment without needing to register as a patient.

Students with pre-existing medical conditions who know they may need regular medical attention are advised to start looking for a GP with available spaces before their arrival in Tilburg. Similarly, students who take regular medication are advised to stock up on their prescribed medication in their home country, and to bring enough medication to Tilburg to last them at least a few weeks. (It is wise to check with the airline or travel operator how much medication is allowed on board.)

HEALTH INSURANCE

tilburguniversity.edu/education/welcome-new-student/insurances

All students are required by law to be covered by appropriate health insurance for their full period of stay in the Netherlands. We strongly recommend students to also have appropriate liability and travel insurance. It is students’ own responsibility to arrange this. Tilburg University recommends Aon+ Student Insurance: aonstudentinsurance.com/students/en/

UNIVERSITY LIBRARY

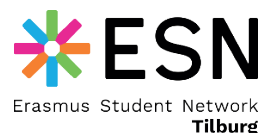
tilburguniversity.edu/about/university-library

Tilburg University’s library is one of the most modern university libraries in Europe, and a popular place to study individually or in groups. It is home to an impressive collection of e-books, e-journals. In addition, its collection of over 800,000 books, journals, illustrations, early works and manuscripts provide a treasure of scholarly information.

MENTOR SYSTEM

esntilburg.nl

ESN Tilburg (formerly I*ESN), our international student organization, organizes a mentor system for incoming international students. ESN also organizes regular activities for all international students and internationally-minded Dutch students at Tilburg University. ESN runs a dynamic international hub in Tilburg city center.



ORIENTATION EVENTS

Registration Days

tilburguniversity.edu/education/welcome-new-student/introduction-activities/registration-days

Tilburg University organizes a Registration Day to offer a warm welcome to Tilburg. On this day, we provide students with all kinds of information and amenities that will contribute to a relaxed and organized start in Tilburg.

TOP Week

tilburguniversity.edu/education/welcome-new-student/introduction-activities/topweek

Tilburg Orientation Program (TOP) organizes the introduction week for all new incoming students, just before the start of your studies. TOP Week is your ticket to Tilburg; through a range of activities, you will get acquainted with the Dutch culture, your new city, fellow students, study associations and more. We recommend participation in the TOP week to get the full introduction to student life in Tilburg!

Program Introduction

tilburguniversity.edu/education/exchange-programs/introduction

The International Mobility team runs a mandatory Program Introduction (PI) for all incoming exchange students during the optional TOP week. During the PI, we welcome all exchange students. Students will get to meet the International Mobility Team and their mentor, and receive more information about, for example, how to make use of our digital student environment as well as our academic and cultural environment.

Sharing is Caring

The aim of Sharing is Caring is to break the cycle of perfectly good household items ending up in the trash when students leave Tilburg. Instead, the items donated by students leaving Tilburg will be collected and offered for free to new international students who arrive in Tilburg during the Registration Days. Expect handy items like pans, books, stationary, cutlery and more!

STUDY AND STUDENT ORGANIZATIONS

tilburguniversity.edu/students/studying/student-associations

Study and student associations are a great place to meet like-minded students and make new friends. Click on the weblink above to browse the possibilities!

SPORTS FACILITIES

tilburguniversity.edu/about/culture-and-sports/sports-center

The state-of-the-art Sports Center offers a wide variety of sports and exercise facilities at all levels. The Center has two large sports halls, fitness rooms, a dedicated weight-training area, squash courts and a sauna. The outdoor facilities include a semi-water-based hockey pitch, six tennis courts and a beach volleyball pitch, among others. The Sports Center offers over 45 sports activities, including Zumba, rock climbing, boxing and yoga.